

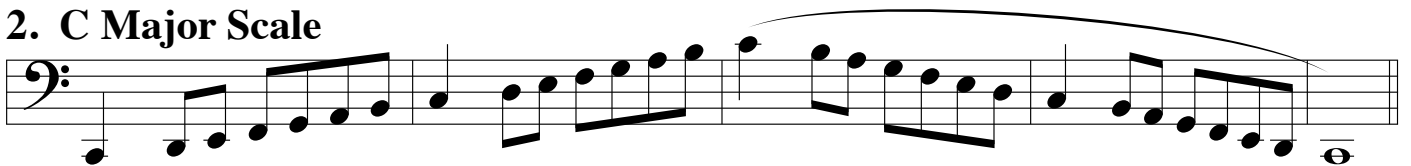
ATSSB Bass Trombone Scales

Scales should be performed as written and may or may not be performed connected. All scales are to be played at a minimum of $\text{♩} = 120$

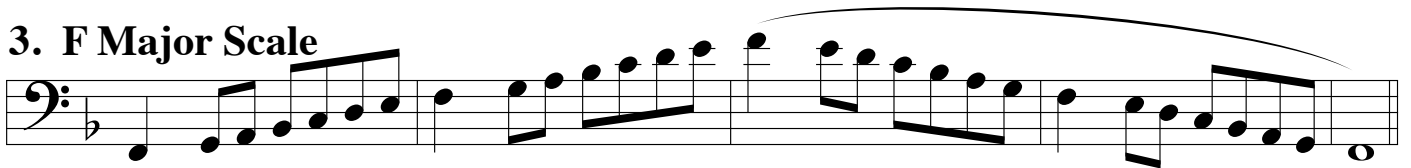
1. G Major Scale



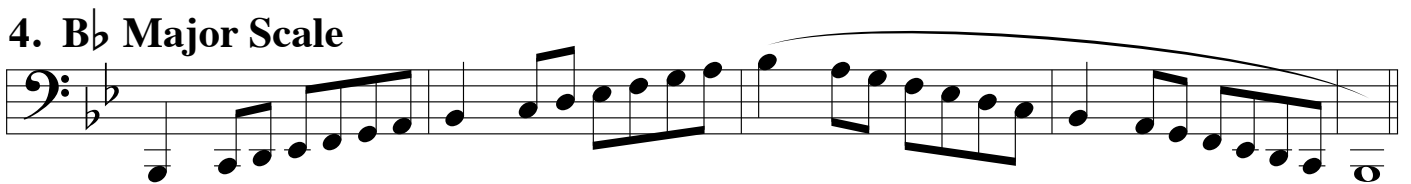
2. C Major Scale



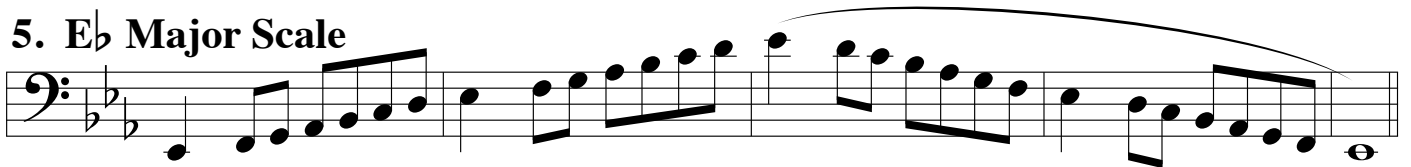
3. F Major Scale



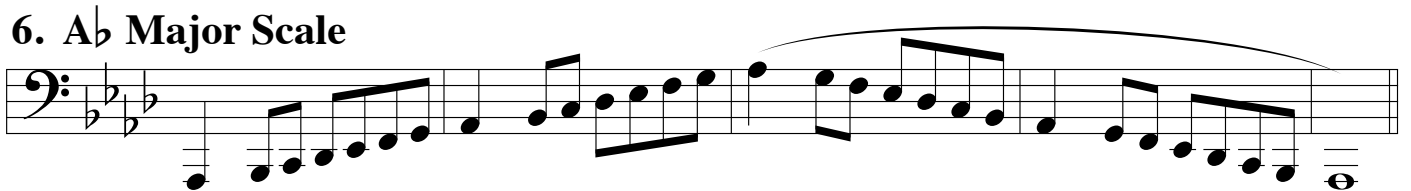
4. B♭ Major Scale



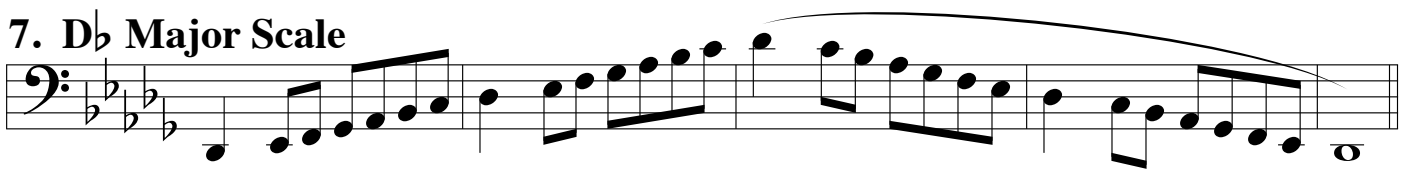
5. E♭ Major Scale



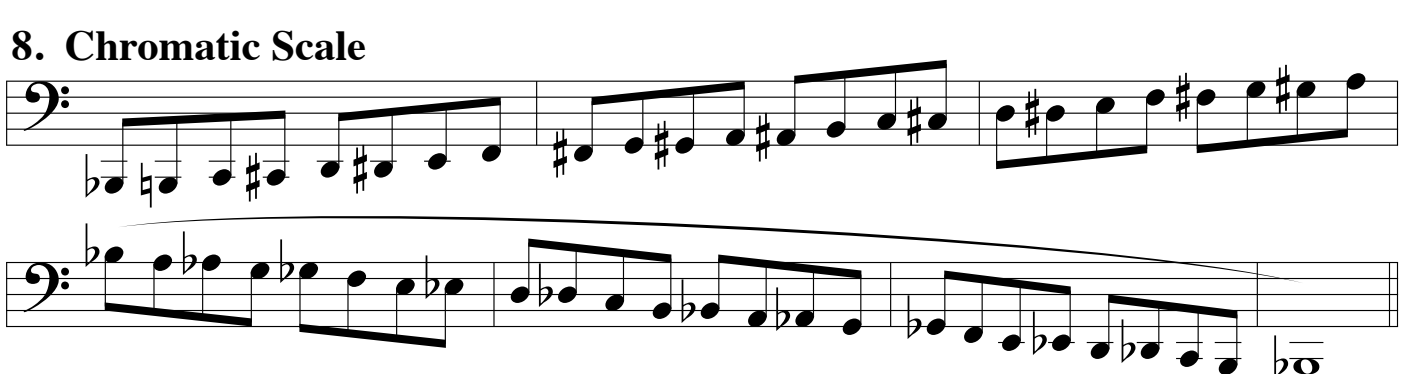
6. A♭ Major Scale



7. D♭ Major Scale



8. Chromatic Scale



Bass Trombone
ATSSB etude No. 1
Year A

C Major

Excerpted from the Rubank
Selected Studies for Baritone

GATTI

Largo cantabile ♩ = 56-66

pp

fleBILE
[mournfully]

afrett. [accel.]

a tempo

rinf. *tratt.* *f* *ten.* *pp*

cresc. *f* *pp* *stent.*

f

p *a tempo* *smorz.*

pp *morendo*

Stop here

Bass Trombone
ATSSB etude No. 2
Year A

A \flat Major

Excerpted from the Rubank
Selected Studies for Baritone

BOHME

Vivace $\text{♩} = 66-76$

f

p

rit. *f a tempo*